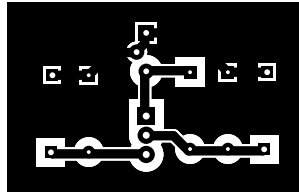
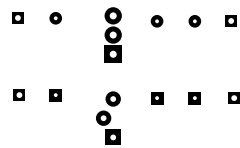


2. solder
3. component
4. componentmask
5. soldermask
6. plated-drill
7. topsilk
8. bottomsilk
9. topassembly
10. bottomassembly
11. fab

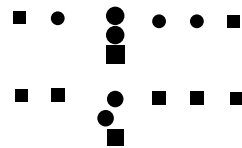


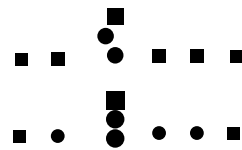
Layer 20/20

Layer component



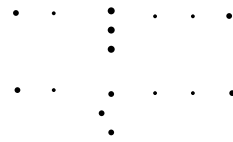
Layer componentmask



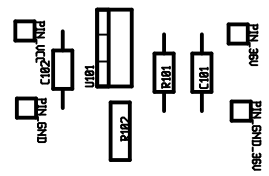


Layer soldermask

Layer plated-drill

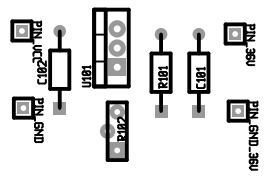


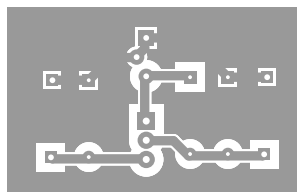
Layer topsilk



Layer bottomzijl

Layer topassembly





Γαλει ροττωμασσεμριλ

There are 3 different drill sizes used in this layout, 16 holes total

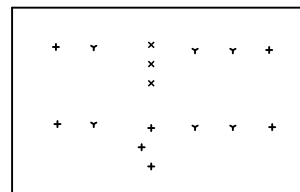
Symbol	Diam. (Inch)	Count	Plated?
✓	<u>0.020</u>	<u>6</u>	<u>YES</u>
+	<u>0.030</u>	<u>7</u>	<u>YES</u>
x	<u>0.037</u>	<u>3</u>	<u>YES</u>

Title: (unknown) - Fabrication Drawing

Author: Ericandor

Date: Tue Jun 12 21:18:50 2007 UTC

Maximum Dimensions: 1574 mils wide, 984 mils high



Board outline is the centerline of this 10 mil rectangle - 0,0 to 1574,984 mils