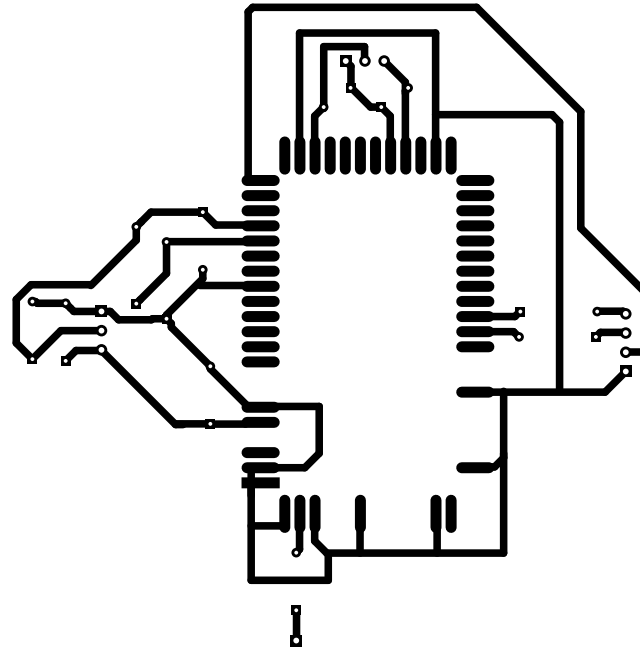
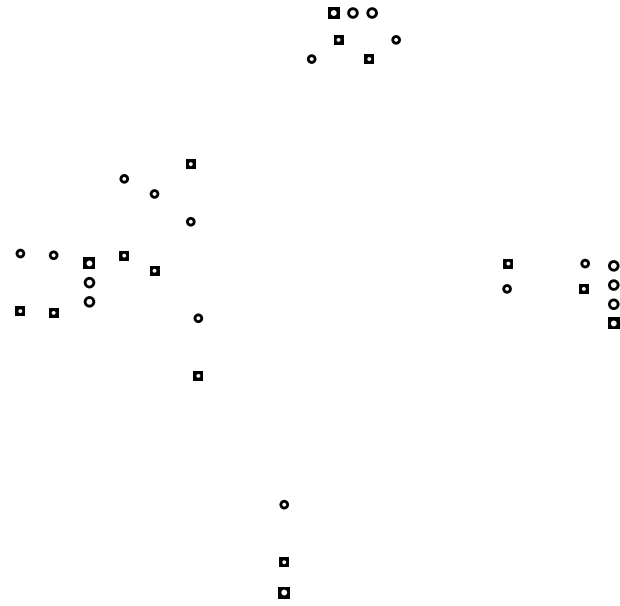


2. solder
3. component
4. componentmask
5. soldermask
6. plated-drill
7. topsilk
8. bottomsilk
9. bottompaste
10. topassembly
11. bottomassembly
12. fab

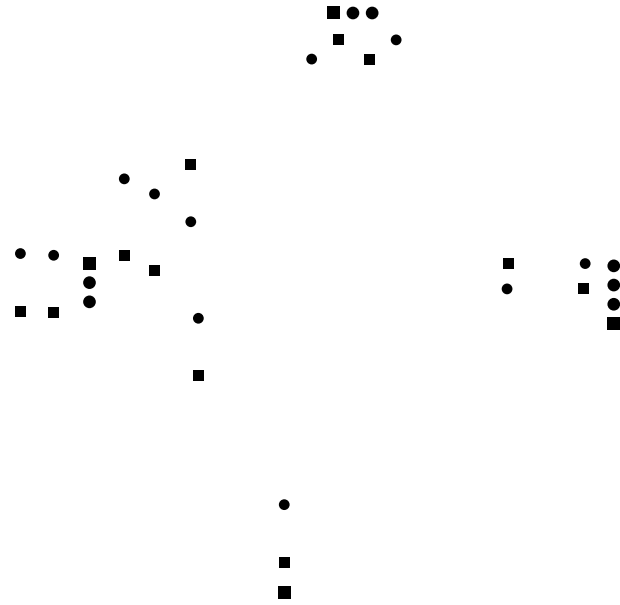
Layer solder



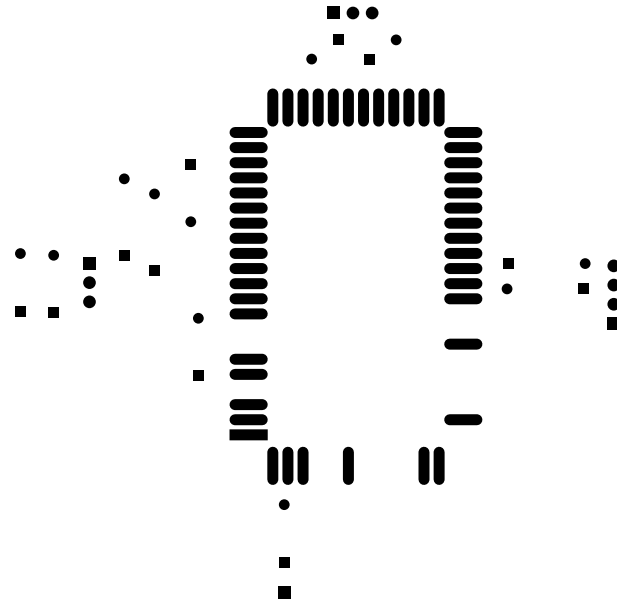
Layer component



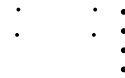
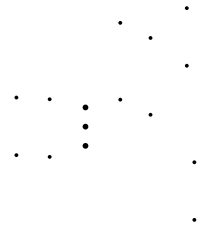
Layer componentmask



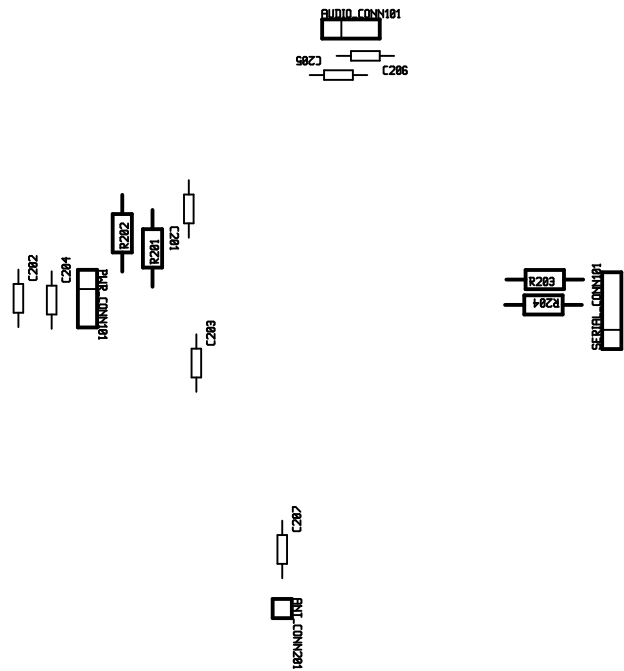
Layer soldermask



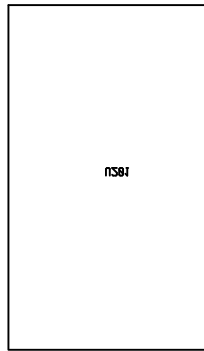
Layer plated-drill



Layer topsilk

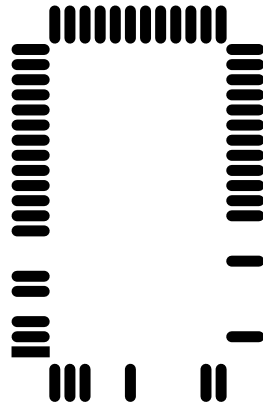


Layer bottomsilk

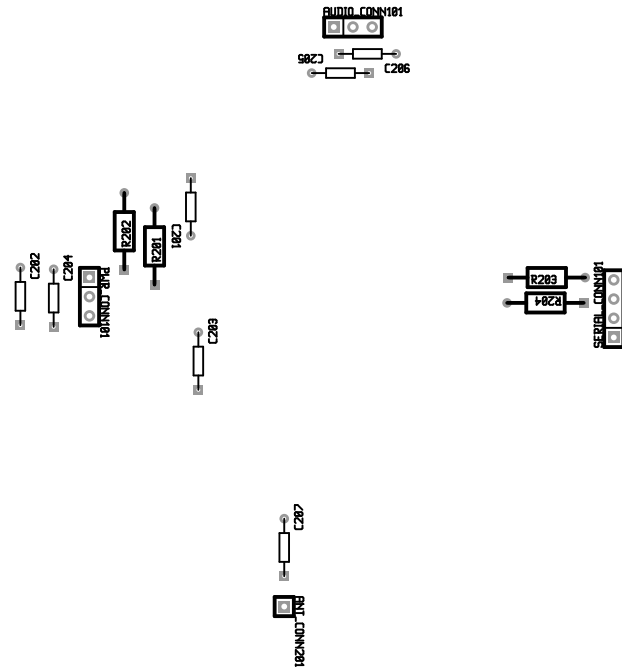




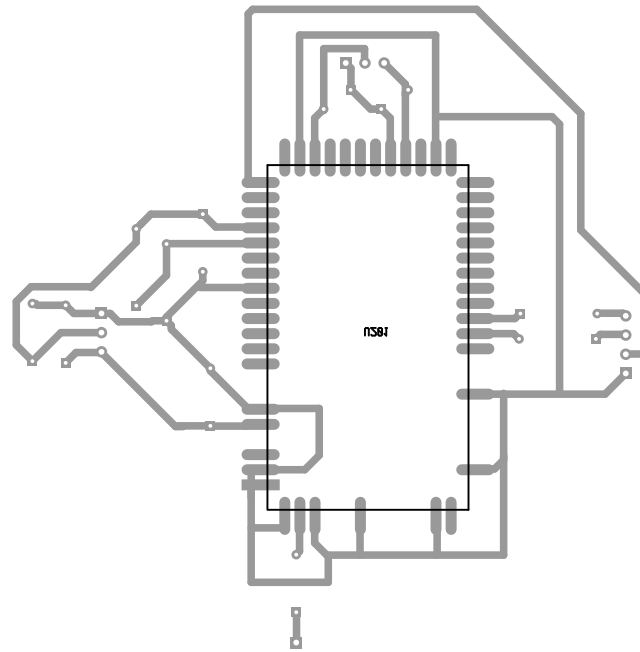
Layer bottompaste



Layer topassembly



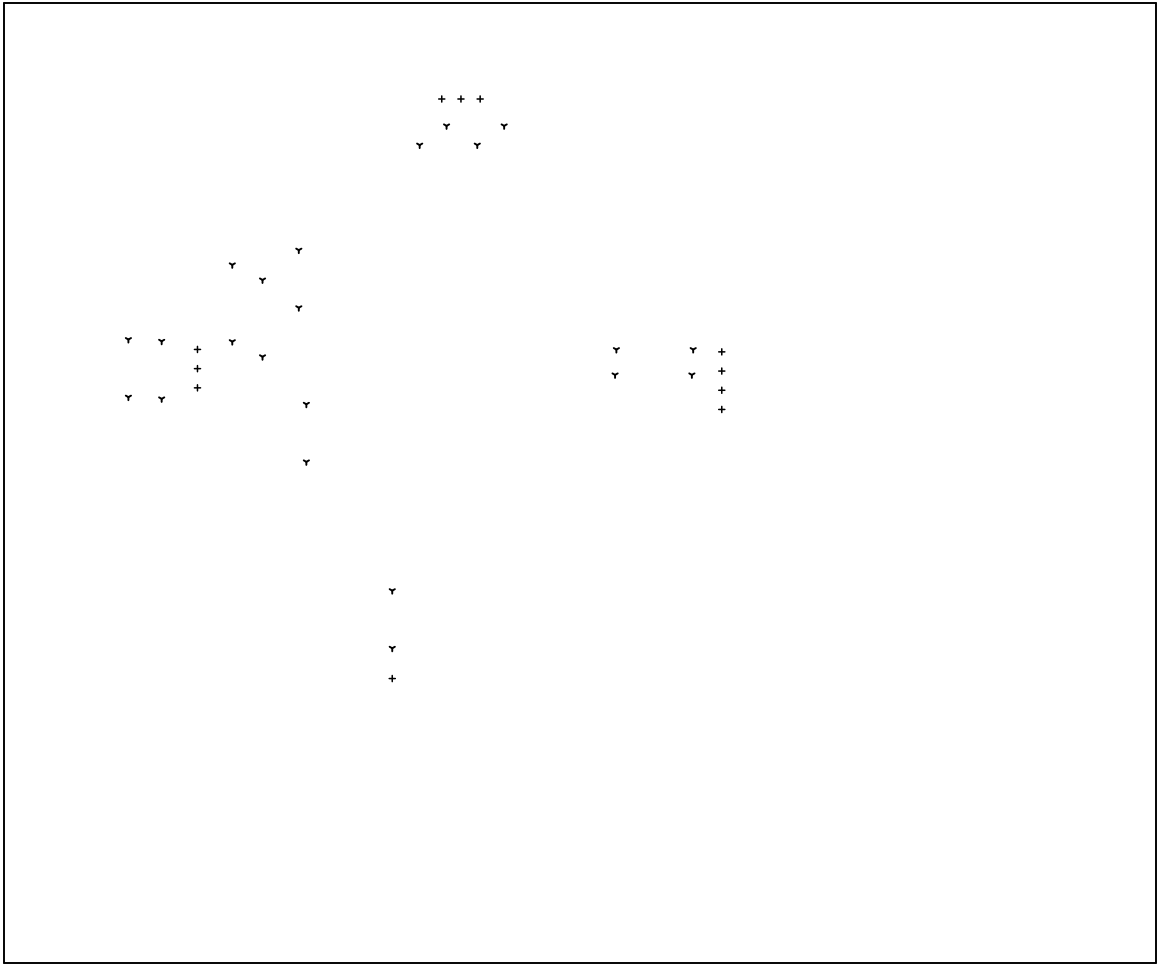
Layer bottomassembly



There are 2 different drill sizes used in this layout, 33 holes total

Symbol	Diam. (Inch)	Count	Plated?
γ	<u>0.020</u>	<u>22</u>	<u>YES</u>
+	<u>0.030</u>	<u>11</u>	<u>YES</u>

Title: (unknown) - Fabrication Drawing  
Author: ericandor  
Date: Sat Jun 2 19:17:17 2007 UTC  
Maximum Dimensions: 6000 mils wide, 5000 mils high



Board outline is the centerline of this 10 mil rectangle - 0,0 to 6000,5000 mils